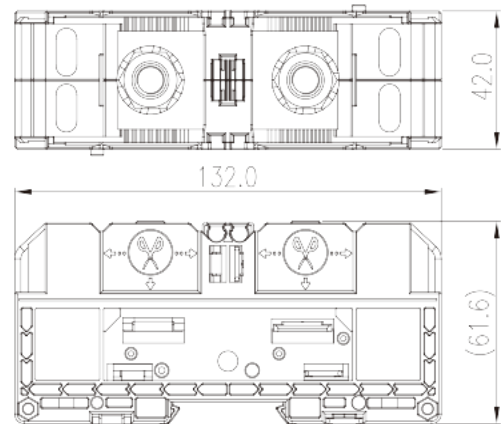
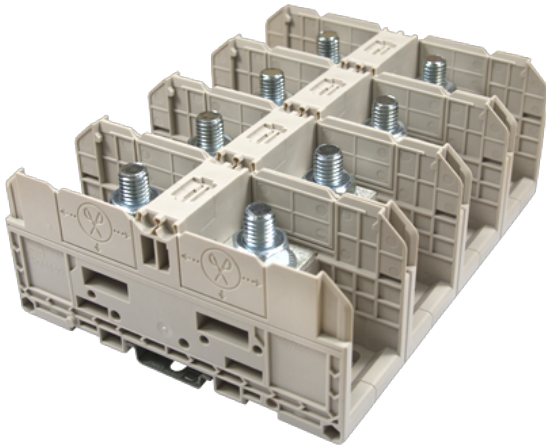


DKM150

DIN Rail Terminal Blocks > Stud Connection

Date:2025-08-15



The web catalog is for reference only. Dinkle remains the right of product modification and engineering change of the design.
The final product is made according to engineering drawing.

Product Description

M10, 1500V, 350A, Beige (default)

General information

Short description	Feed-through Single Level, Stud Connection
Category	Feed-through Single Level
Pitch (mm)	42
Color	Refer to drawing
Connection method	Stud Connection
Type of locking	Panel Mounting/Rail Mounting
Length (mm)	132
Width (mm)	42
Height (mm)	61.6
Level	Single level
Connection points	2

Material information

Insulation material	PA
Insulation material group	I
Flame retardant rating , compliant with UL94	V0

Insulation resistance

 $\geq 500M\Omega$ at DC 500V

Connection data-IEC

Rated voltage (V)	1500
Rated current (A)	309
Rated voltage (III/3)(V)	1500
Rated impulse voltage (III/3)(KV)	8
Conductor cross section solid. min (mm ²)	10
Conductor cross section solid.max (mm ²)	150
Conductor cross section stranded. min (mm ²)	10
Conductor cross section stranded. max (mm ²)	150
Screw thread	M10
Rated torque (N.m)	10~20
Recommend tightening torque. min (N.m)	10
Recommend tightening torque. max (N.m)	20
Stripping Length (mm)	The stripping length depends on the specification provided by the cablelug manufacturer
Mounting rail	TS-35
End cover plate required	NO
Grounding connections	NO

Connection data-UL

Rated voltage (UL/CUL Group E)(V)	1500
Rated current (UL/CUL Group E)(A)	*Single Cable 285A / Double Cable 350A
Min. solid wire connection (AWG) acc. to UL/CUL	10
Max. solid wire connection AWG acc. to UL/CUL	300(kcmil)
Min. stranded wire connection AWG acc. to UL/CUL	10
Max. stranded wire connection AWG acc. to UL/CUL	300(kcmil)

Environment & Safety

Back of the hand protection (YES or NO)	NO
Finger protection (YES or NO)	NO
Operating temperature. max (°C)	120
Operating temperature. min (°C)	-40

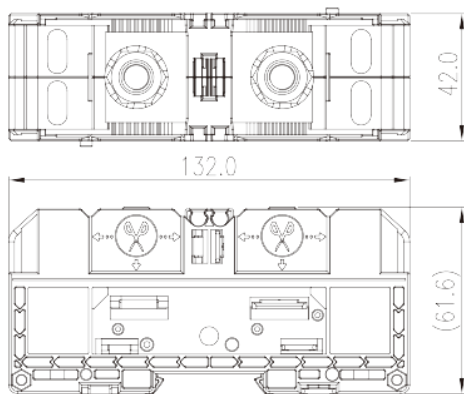
UL Recognized

Wire Range (Group E)(AWG)	10~300(kcmil)
Rated voltage (Group E)(V)	1500
Rated current (Group E)(A)	*Single Cable 285A / Double Cable 350A

CUL Recognized

Wire Range (Group E)(AWG)	10~300(kcmil)
Rated voltage (Group E)(V)	1500
Rated current (Group E)(A)	*Single Cable 285A / Double Cable 350A

Drawings



Approvals

