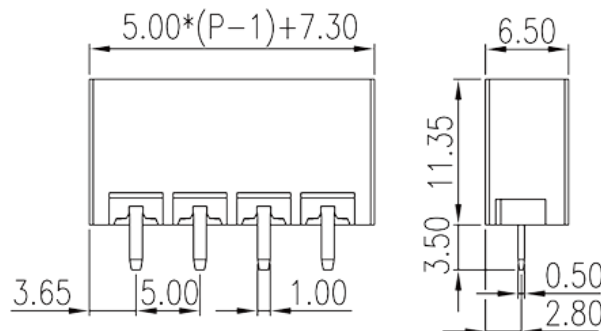
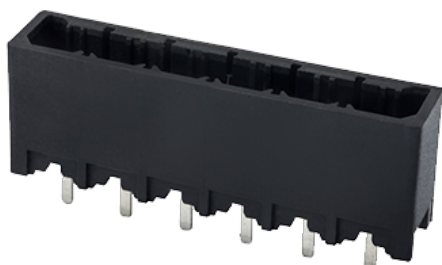


# 0226-37XX

PCB Terminal Blocks > PCB Connector-Socket

Date:2026-04-06Version:V1



The web catalog is for reference only. Dinkle remains the right of product modification and engineering change of the design. The final product is made according to engineering drawing.

## Product Description

Pitch : 5.00 mm, 300V, 10A

## General information

|  |                                      |
|--|--------------------------------------|
| Short description                      | PCB Connector-Socket, Wave soldering |
| Category                               | PCB Connector-Socket                 |
| Pitch (mm)                             | 5.00                                 |
| Color                                  | Black (default)                      |
| Type of locking                        | Without                              |
| Soldering method                       | Wave soldering                       |
| Length (mm)                            | $5.00*(P-1)+7.3$                     |
| Width (mm)                             | 6.5                                  |
| Height (mm)                            | 11.35                                |
| Pin demensions (Thickness x Width)(mm) | 0.5x1.0                              |
| PCB hole diameter (mm)                 | 1.4                                  |
| Number of positions                    | 02P~16P                              |
| Level                                  | Single level                         |

## Material information

|                     |    |
|---------------------|----|
| Insulation material | PA |
|---------------------|----|

|  |                   |
|--|-------------------|
| Insulation material group                    | I                 |
| Flame retardant rating , compliant with UL94 | V0                |
| Insulation resistance                        | □500MΩ at DC 500V |
| Conductor material                           | COPPER ALLOY      |
| Plating of conductor surface                 | Tin PLATED        |

## Connection data-IEC

|                                   |      |
|-----------------------------------|------|
| Rated voltage (V)                 | 630  |
| Rated current (A)                 | 17.5 |
| Rated voltage (II/2)(V)           | 630  |
| Rated voltage (III/2) (V)         | 320  |
| Rated voltage (III/3)(V)          | 320  |
| Rated impulse voltage (II/2)(KV)  | 4    |
| Rated impulse voltage (III/2)(KV) | 4    |
| Rated impulse voltage (III/3)(KV) | 4    |

## Connection data-UL

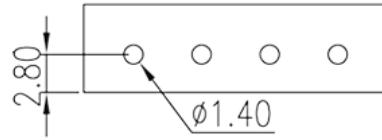
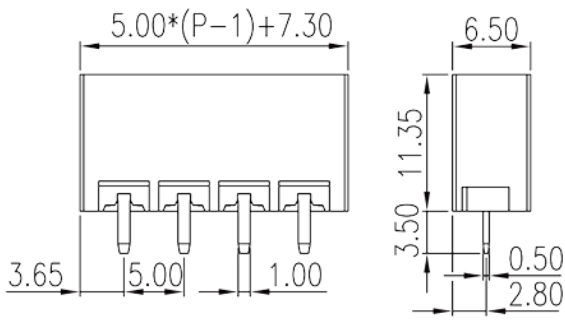
|                                   |     |
|-----------------------------------|-----|
| Rated voltage (UL/CUL Group B)(V) | 300 |
| Rated current (UL/CUL Group B)(A) | 10  |
| Rated voltage (UL/CUL Group D)(V) | 300 |
| Rated current (UL/CUL Group D)(A) | 10  |

## Environment & Safety

|                                 |     |
|---------------------------------|-----|
| Finger protection (YES or NO)   | YES |
| Operating temperature. max (°C) | 120 |
| Operating temperature. min (°C) | -40 |

## Drawings

|  |  |
|--|--|
|  |  |
|--|--|



## Approvals

