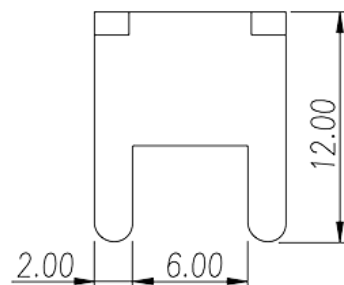
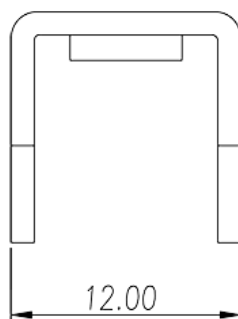
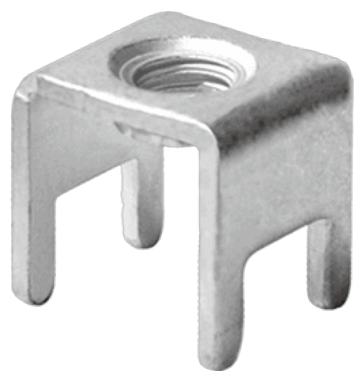


## P-831

栅板式端子 &gt; 独立端子

下载日期:2026-04-05版次:1.2



目录仅供参考，实际规格仍依照产品工程图面为准

## 产品介绍

Pitch : 8.00 / 10.80 mm , 1.2x2.0mm, 85A

## 一般资讯

产品概述	Barrier terminal blocks , Quick terminal blocks
产品类型	Quick terminal blocks
产品间距 (mm)	8.00 / 10.80
引脚尺寸 (厚度___ x 宽度___mm)	1.2x2.0

## 材料信息

导体材料	Copper Alloy
导体表面镀层	Tinned

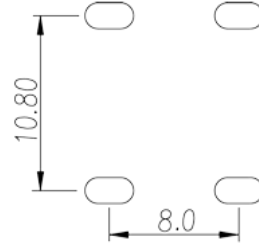
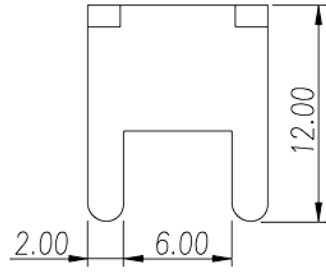
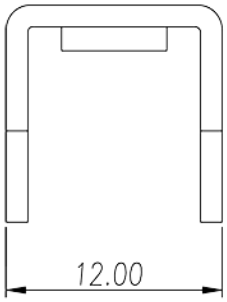
## 连接数据-IEC

螺纹规格	M5
------	----

## VDE认证参数

额定电流 (A)	85
----------	----

## 图面



认证

